



This document was prepared for the ETI by third parties under contract to the ETI. The ETI is making these documents and data available to the public to inform the debate on low carbon energy innovation and deployment.

Programme Area: Marine

Project: ReDAPT

Title: ReDAPT: Turbine Deployments and Achievements in Operation

Context:

One of the key developments of the marine energy industry in the UK is the demonstration of near commercial scale devices in real sea conditions and the collection of performance and environmental data to inform permitting and licensing processes. The ETI's ReDAPT (Reliable Data Acquisition Platform for Tidal) project saw an innovative 1MW buoyant tidal generator installed at the European Marine Energy Centre (EMEC) in Orkney in January 2013. With an ETI investment of £12.6m, the project involved Alstom, E.ON, EDF, DNV GL, Plymouth Marine Laboratory (PML), EMEC and the University of Edinburgh. The project demonstrated the performance of the tidal generator in different operational conditions, aiming to increase public and industry confidence in tidal turbine technologies by providing a wide range of environmental impact and performance information, as well as demonstrating a new, reliable turbine design.

Disclaimer:

The Energy Technologies Institute is making this document available to use under the Energy Technologies Institute Open Licence for Materials. Please refer to the Energy Technologies Institute website for the terms and conditions of this licence. The Information is licensed 'as is' and the Energy Technologies Institute excludes all representations, warranties, obligations and liabilities in relation to the Information to the maximum extent permitted by law. The Energy Technologies Institute is not liable for any errors or omissions in the Information and shall not be liable for any loss, injury or damage of any kind caused by its use. This exclusion of liability includes, but is not limited to, any direct, indirect, special, incidental, consequential, punitive, or exemplary damages in each case such as loss of revenue, data, anticipated profits, and lost business. The Energy Technologies Institute does not guarantee the continued supply of the Information. Notwithstanding any statement to the contrary contained on the face of this document, the Energy Technologies Institute confirms that the authors of the document have consented to its publication by the Energy Technologies Institute.

ReDAPT – Reliable Data Acquisition Platform for Tidal



ReDAPT - MC6 & 7 – Turbine Deployments and Achievements in Operation



Jon Rhymes – Engineering Director

© 2015 Tidal Generation Ltd

This document contains information which is proprietary and confidential to Tidal Generation Ltd provided under the TECHNOLOGY CONTRACT FOR REDAPT PROJECT dated 28th July 2010, which may not, without the prior written consent of Tidal Generation Ltd, be used or reproduced, in whole or in part, or communicated to any person not employed by the Energy Technologies Institute LLP, Tidal Generation Ltd, E.ON Engineering Limited, Electricite de France SA, Garrad Hassan & Partners Limited, The University Court of the University of Edinburgh, The European Marine Energy Centre Limited and/or Plymouth Marine Laboratory.

This information is given in good faith based upon the latest information available to Tidal Generation Ltd, no warranty or representation is given concerning such information, which must not be taken as establishing any contractual or other commitment binding upon Tidal Generation Ltd or any of its subsidiary or associated companies.

Overview – 1MW DeepGenIV Concept



Turbine

- Buoyant nacelle
- Deployed using a low cost vessel
- Deployed without requiring divers
- Variable pitch blades to control rotor speed, loads, and power
- 3 Position Clamp
 - Detachable from tripod for easy maintenance
 - Ability to yaw to any heading
- Provides grid compliant power at the end of the cable
- Maximum rated power achieved at 2.7m/s flow speed.

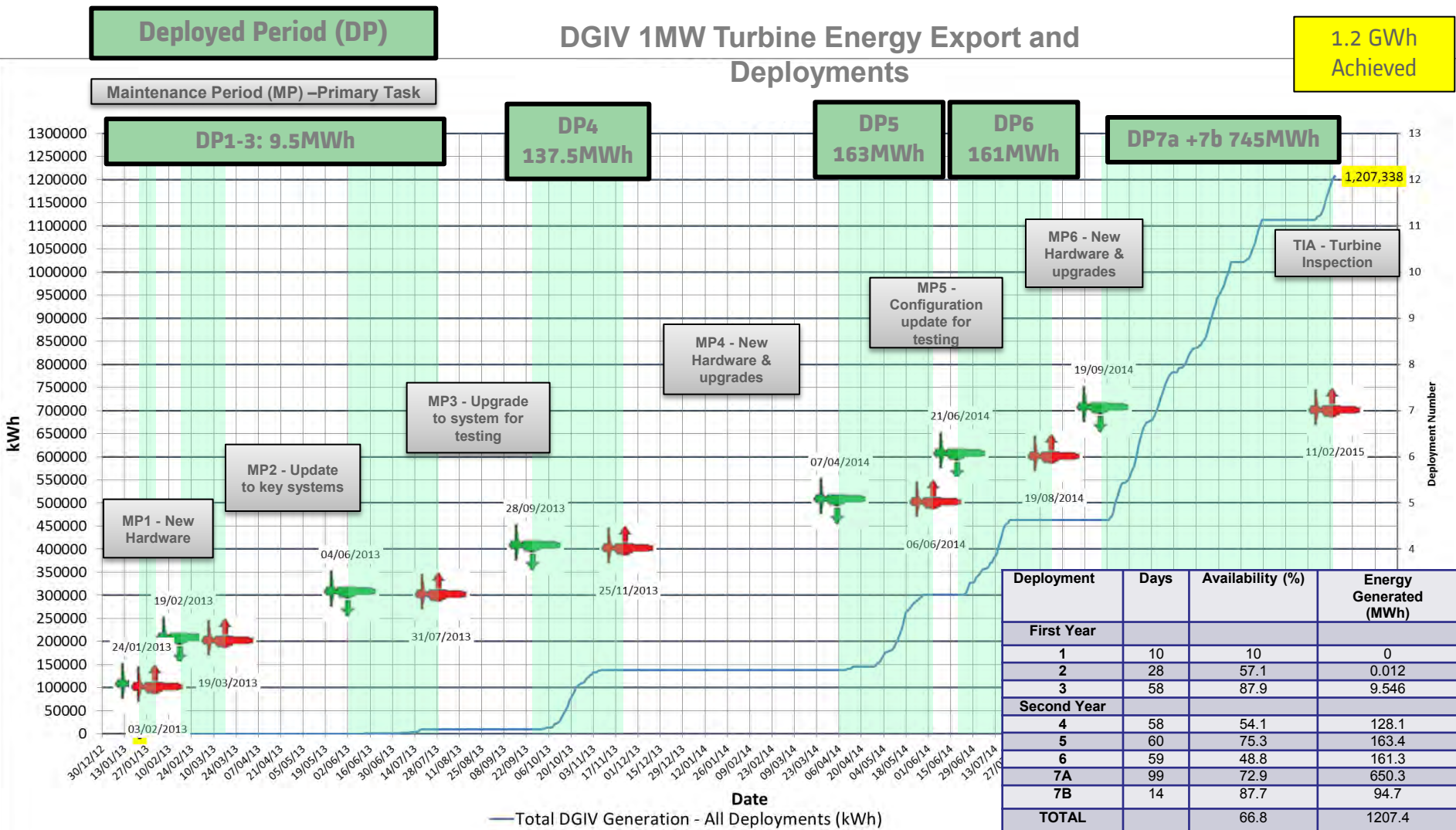
Foundation (Previously used by DGIII)

- Lightweight structure
- Installed using Dynamically Positioned (DP) vessels
- Attached to the seabed using piles
- Able to accept different sized turbines

Turbine Generation Overview

1.2 GWh Achieved

DGIV 1MW Turbine Energy Export and Deployments



Deployment 7A: 19/09/2014 – 27/12/2014



Key Testing

- Controller optimisation and Rotor testing to establish optimal performance
- Full IEC standard power curve
- Completion of all ReDAPT flow data gathering
- Noise survey – characterising acoustic signature of turbine

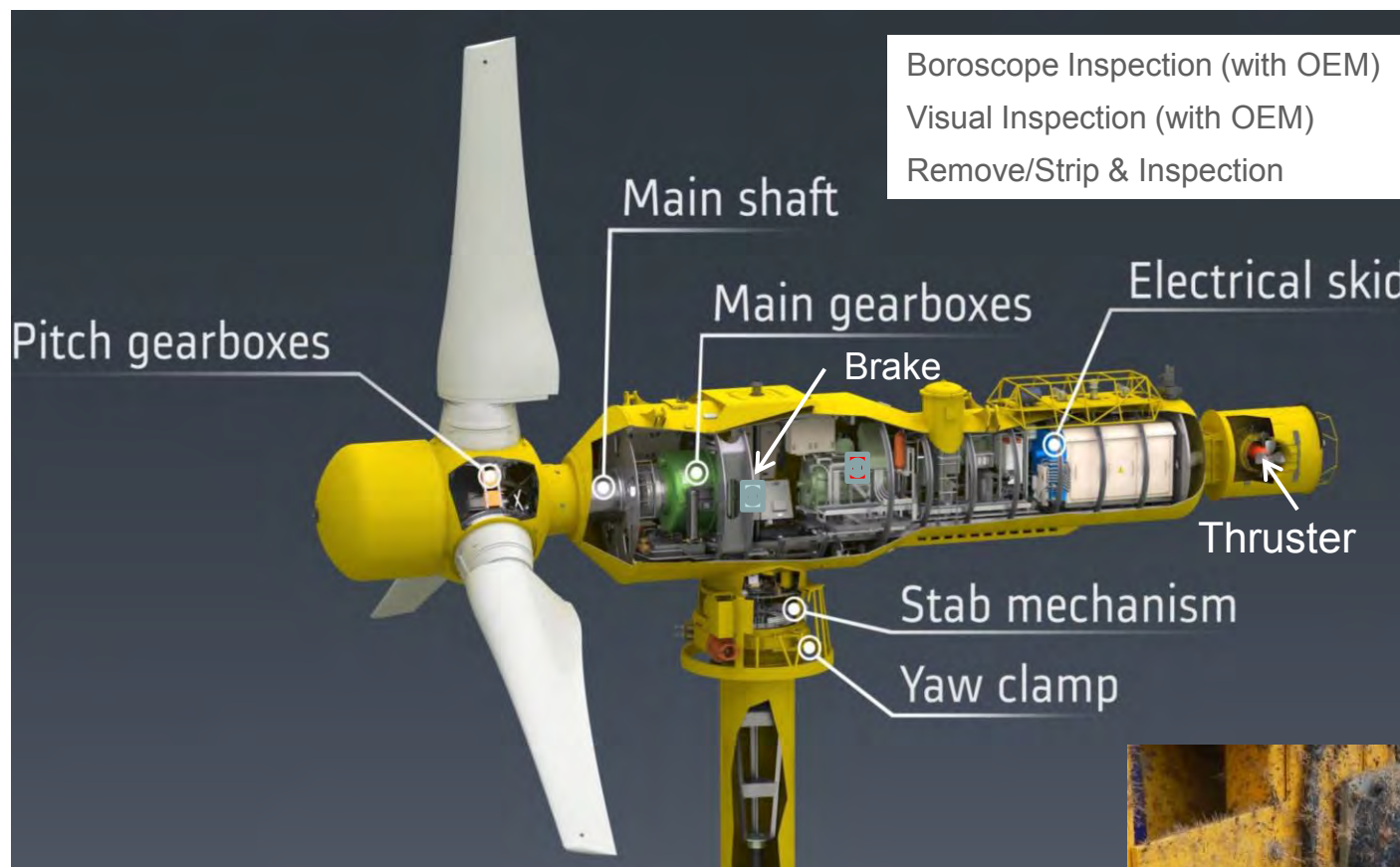
Deployment Information

Duration	99 days
Generating Hours	1262 hours
Energy Generated	650.3MWh
Availability	72.9%
Number of Tests Conducted	13

Marine Operations

- Contingency re-energisation operation:
Following the communications loss the turbine could not be re-energised without the risk of damage to the frequency converter – vessel connection required to set the turbine up in a safe state for re-energisation.

Turbine Strip – focus areas

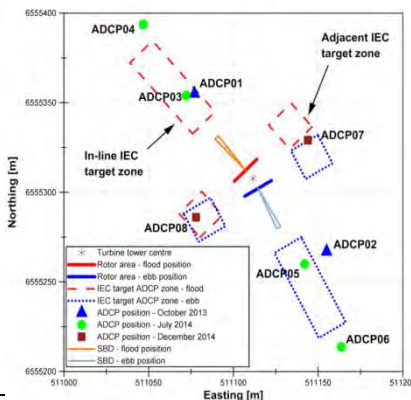
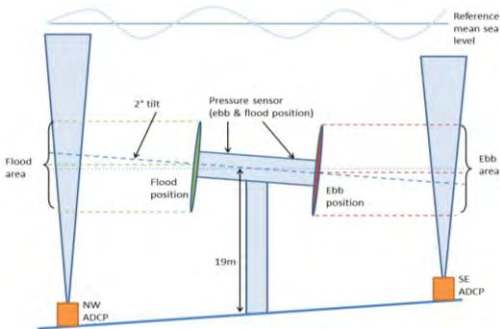
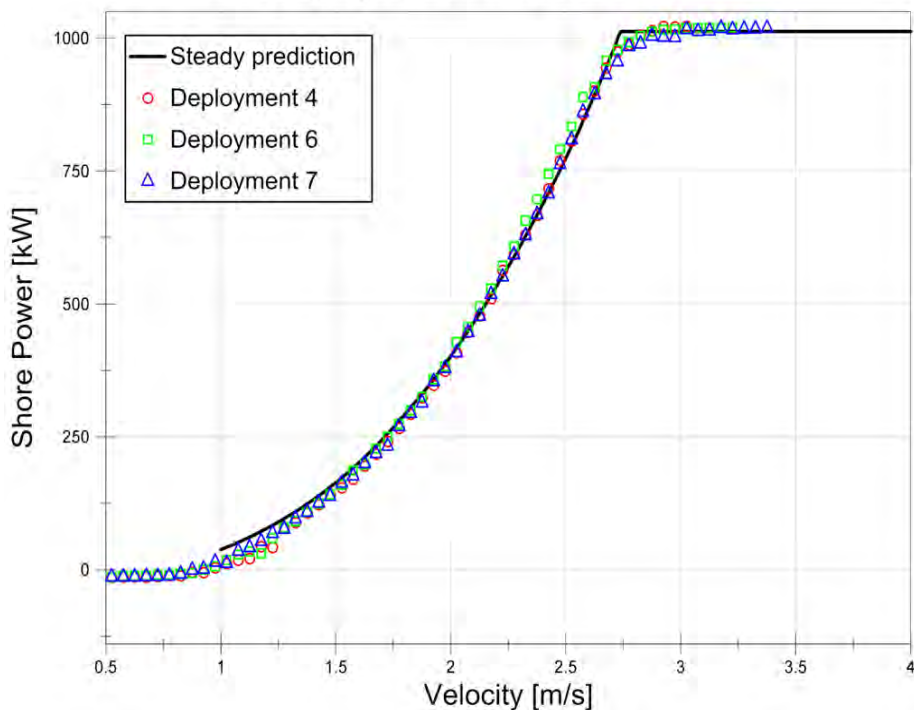


- The inspections resulted in no major unexpected findings, however some Biofouling was seen.
- Investigations yielded many valuable lessons learnt to carry forward to future turbine designs.



Turbine Performance

All Deployment Power Curves



Overview

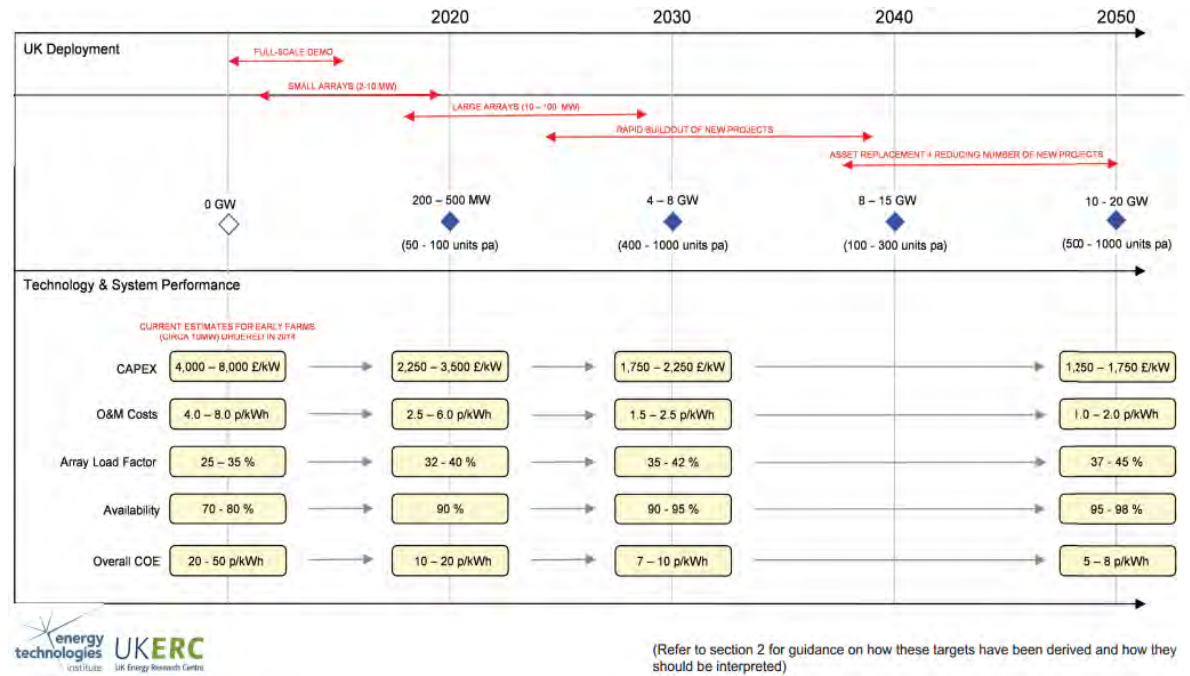
- Power curves measured and reported following methodology in IEC/TS 62600-200 during deployments 4, 6 and 7.
- ADCP position / orientation changed to investigate sensitivity to produced results.
- Full-deployment power curves (average of Flood and Ebb) shown in figure.

Lessons Learned

- Difficult to meet IEC/TS 62600-200 acceptance criteria. Specific TRN advised to measure power curve.
- Power curve impacted by other performance testing. Keep tests separate.
- Reference height of ADCP and turbine needs to be well understood to reduce uncertainties.
- ADCP siting and orientation is key to ensure accuracy of heading
- Care needs to be taken in the time synchronisation of the discrete datasets for analysis.

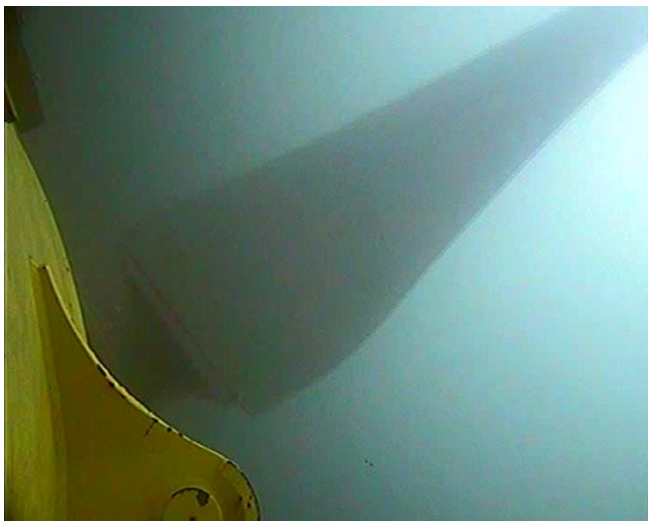
Cost of Electricity Modelling

- The measured performance of the DEEP-Gen IV turbine is in line with the predictions, adding confidence to the fact that given the site conditions yield for a single turbine (or even a small array) can be determined.



- Availability of DEEP-Gen IV is in line with ETI roadmap in latter deployments. Alstom are confident that the ETI roadmap target of 90% availability for first large arrays will be achievable.
- Challenges in terms of maintenance turn-around still remain.
- Studies agree that early small arrays still require significant capital support and/or risk mitigation support mechanisms. Once the sector has delivered several small arrays, the level of capital support can be reduced.

Environmental Interaction



Deck Plate Mounted Camera

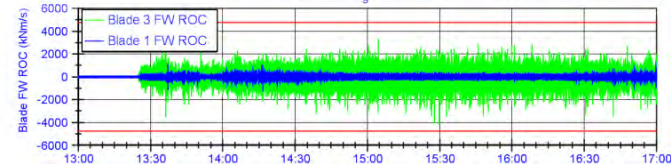
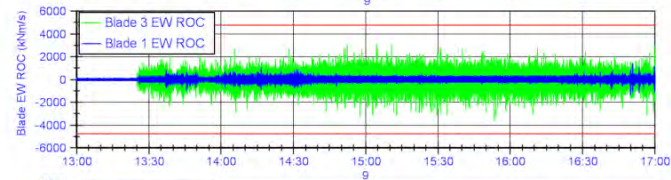
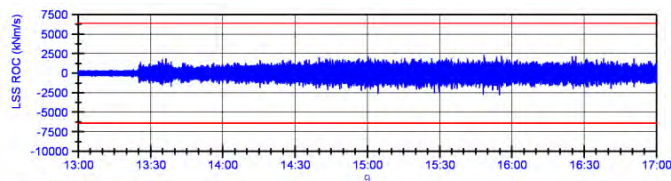
- Very little success has been had with a deck plate mounted camera due to camera complexity and cable failure
- Further to this all cameras suffered with visibility in the turbid flow field

Acoustic Survey

- Acoustic surveys began to characterise the noise associated with a tidal site and that associated with the turbine.
- The noise levels of the turbine were characterised at an appreciably low level when generating, idling and yawing.
- The frequency of the noise produced by the turbine was predominantly lower frequency noise <500Hz and there was little noise associated with high frequencies.
- It was also noted that the noise of the tidal flow passing through the site was quite significant.

Strain Gauge Monitoring

- In order to highlight potential marine life interactions the strain gauge data from the blades was analysed
- Thresholds were established and signals monitored that could be used to characterise an interaction
- Initial studies helped to identify brake events, shutdowns and signal losses, such that these could be quickly interpreted.
- No events representing a potential mammal interaction were observed.



ReDAPT Key Outcomes

- Product Design
 - Good validation of design process models including methods to interpret environmental data and predict loads
 - Tidal Bladed validation with site data and strain gauge measurements
- Design Verification and Rotational Testing
 - Importance of sub-system and software design/technology proving by rig test
- Deployment and Retrieval
 - Minimise the number of ROV operations and umbilical's in the water
 - Validation of deployment method, battery power margins and contingencies
 - Free ascent optimised
- Performance and Yield
 - Power curve and yield as expected
 - Grid compliant power quality
- Turbine Control
 - Importance of sub-system and software validation
 - Pitch control optimised
 - Power, Torque, Speed control Validation
 - Yaw and clamp performance optimised
 - Safety system and contingencies



Further Information on ReDAPT

- ETI Website contains links to the Public Domain Reports

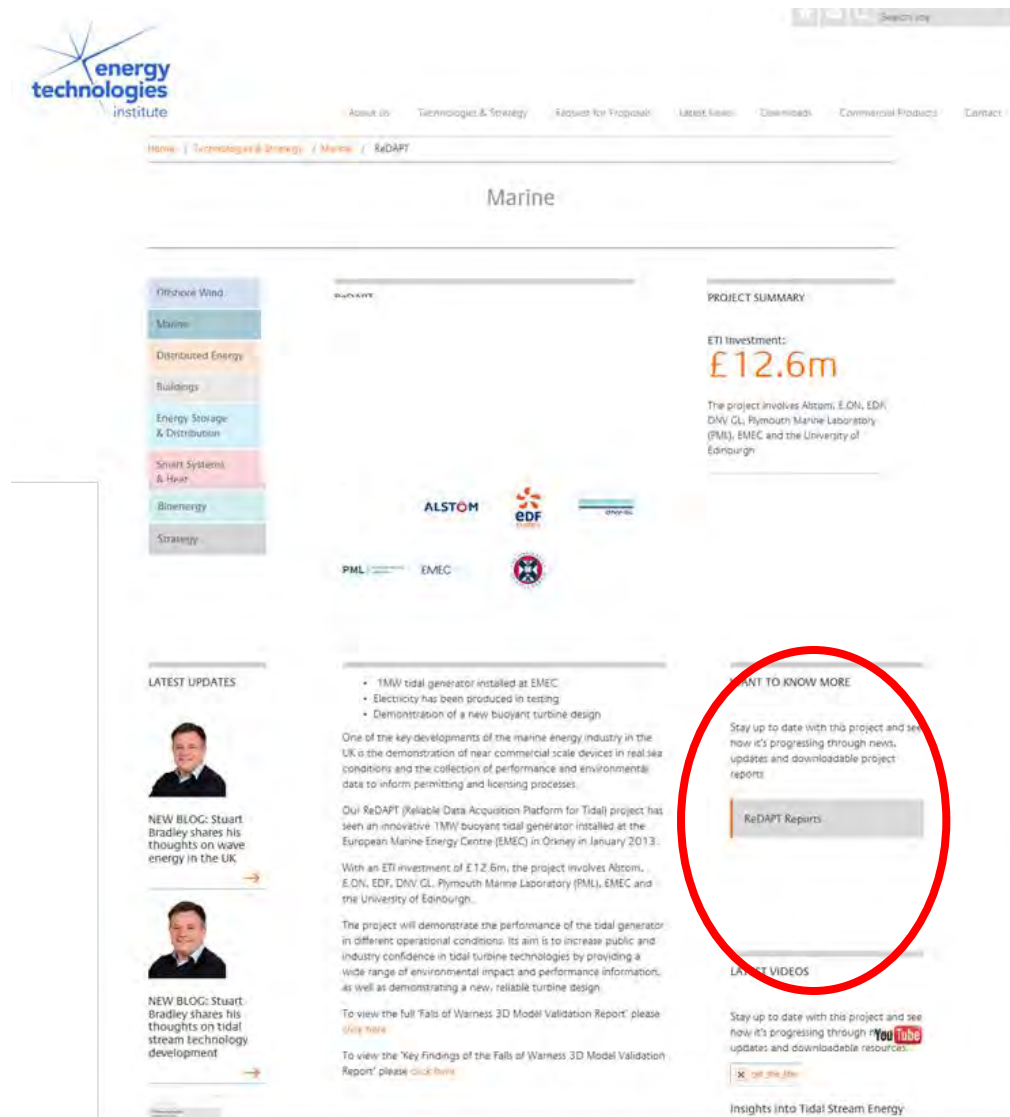
<http://www.eti.co.uk/project/redapt/>

- UKERC – Energy Data Centre (EDC) database for ADCP measured flow data

<http://data.ukedc.rl.ac.uk/browse/edc/renewables/marine>

- Alstom – Paul Chesman – ReDAPT Programme Manager

Paul.chesman@alstom.com





*With Alstom, preserve the environment.
Is printing this presentation really necessary?*

ALSTOM

Shaping the future