



www.eti.co.uk

What happens to energy beyond the meter?

Andrew Haslett FREng, Chief Engineer

Reinventing Energy Summit - November 25th 2016

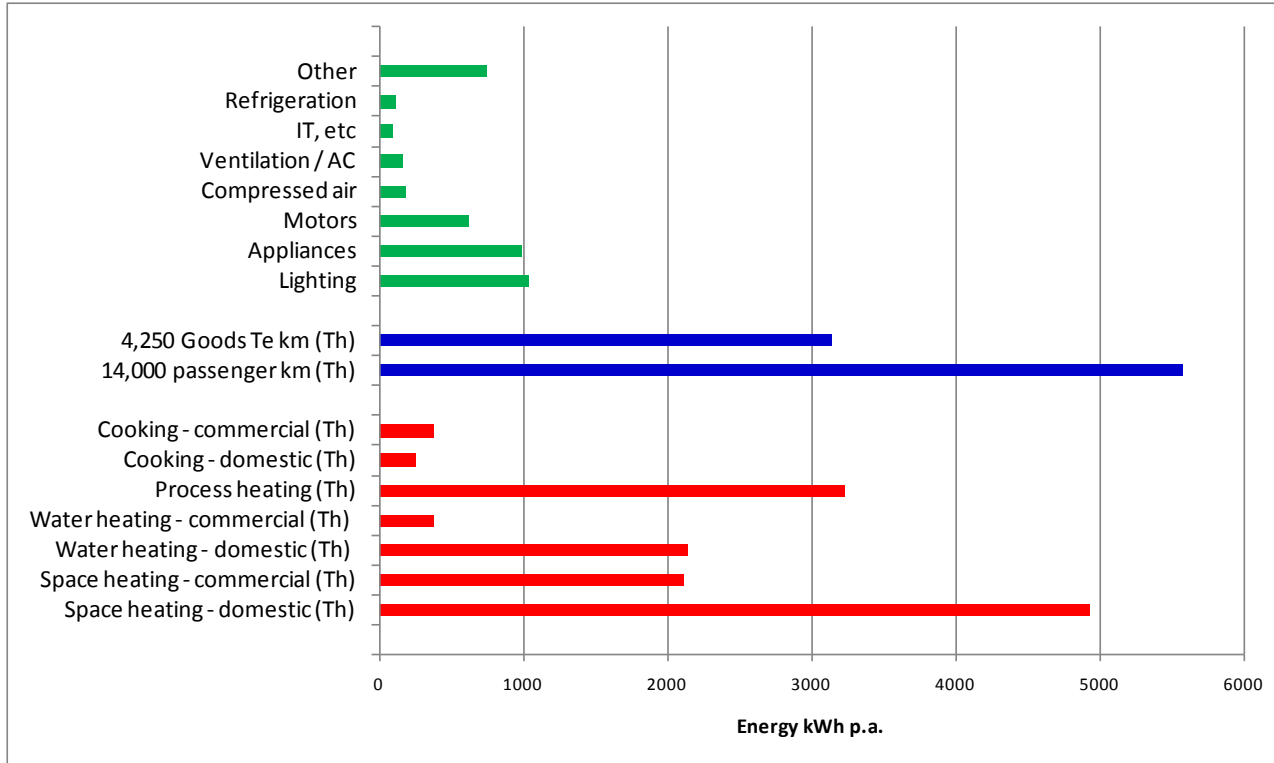
© 2016 Energy Technologies Institute LLP

The information in this document is the property of Energy Technologies Institute LLP and may not be copied or communicated to a third party, or used for any purpose other than that for which it is supplied without the express written consent of Energy Technologies Institute LLP.

This information is given in good faith based upon the latest information available to Energy Technologies Institute LLP, no warranty or representation is given concerning such information, which must not be taken as establishing any contractual or other commitment binding upon Energy Technologies Institute LLP or any of its subsidiary or associated companies.

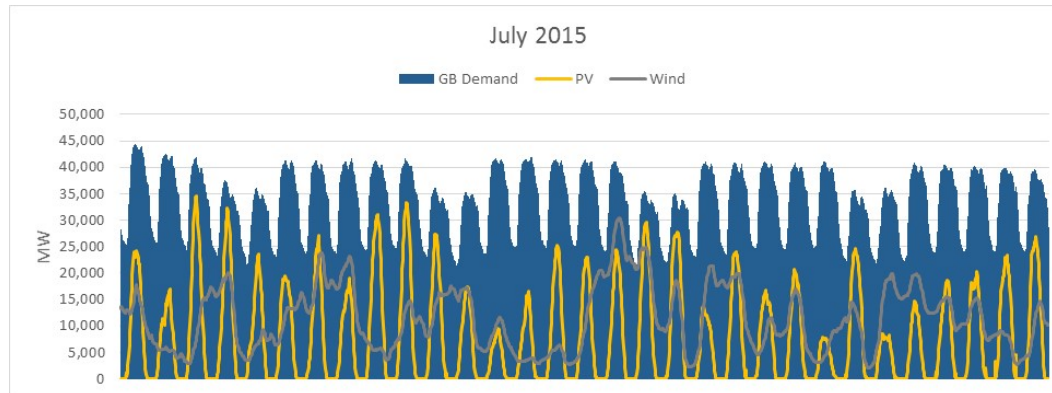
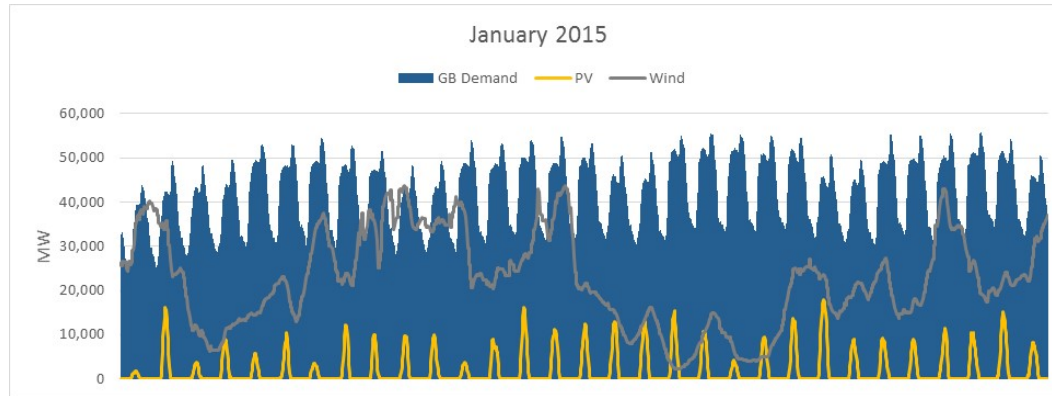


Annual energy use per person in UK (2010)



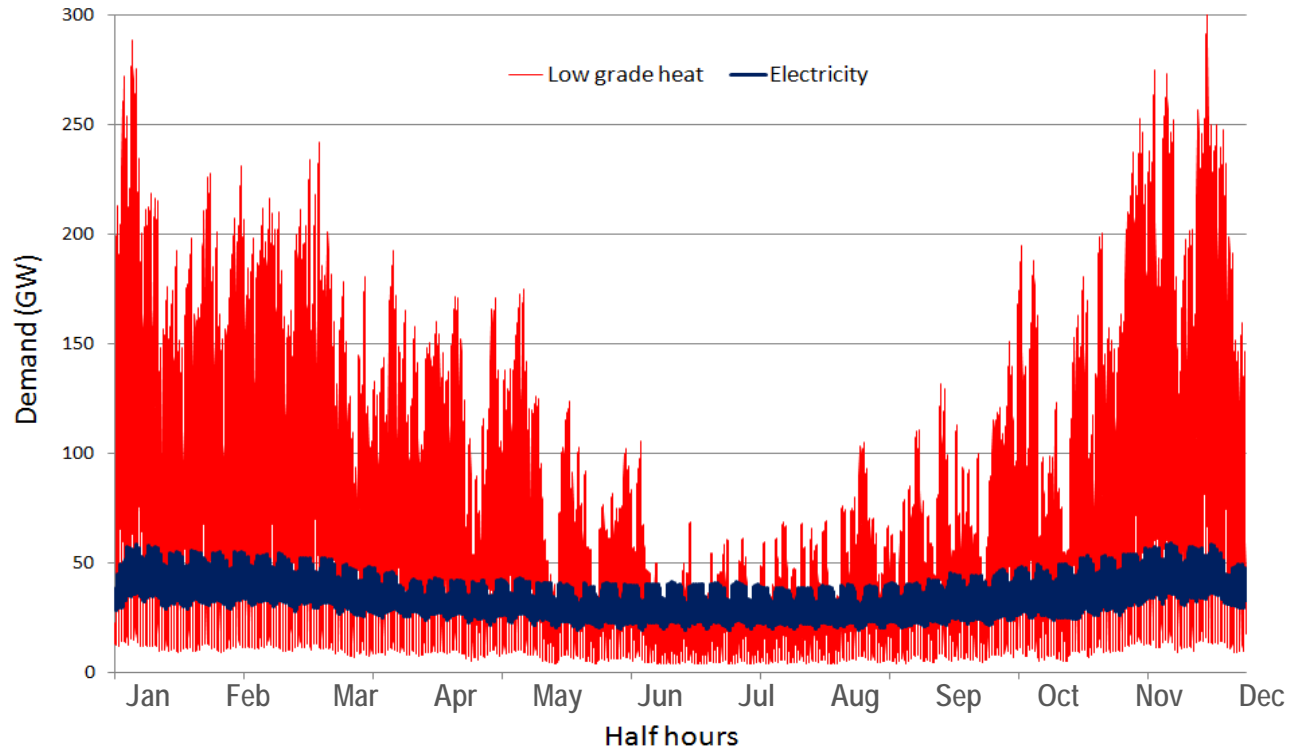


45GW each of PV and Wind





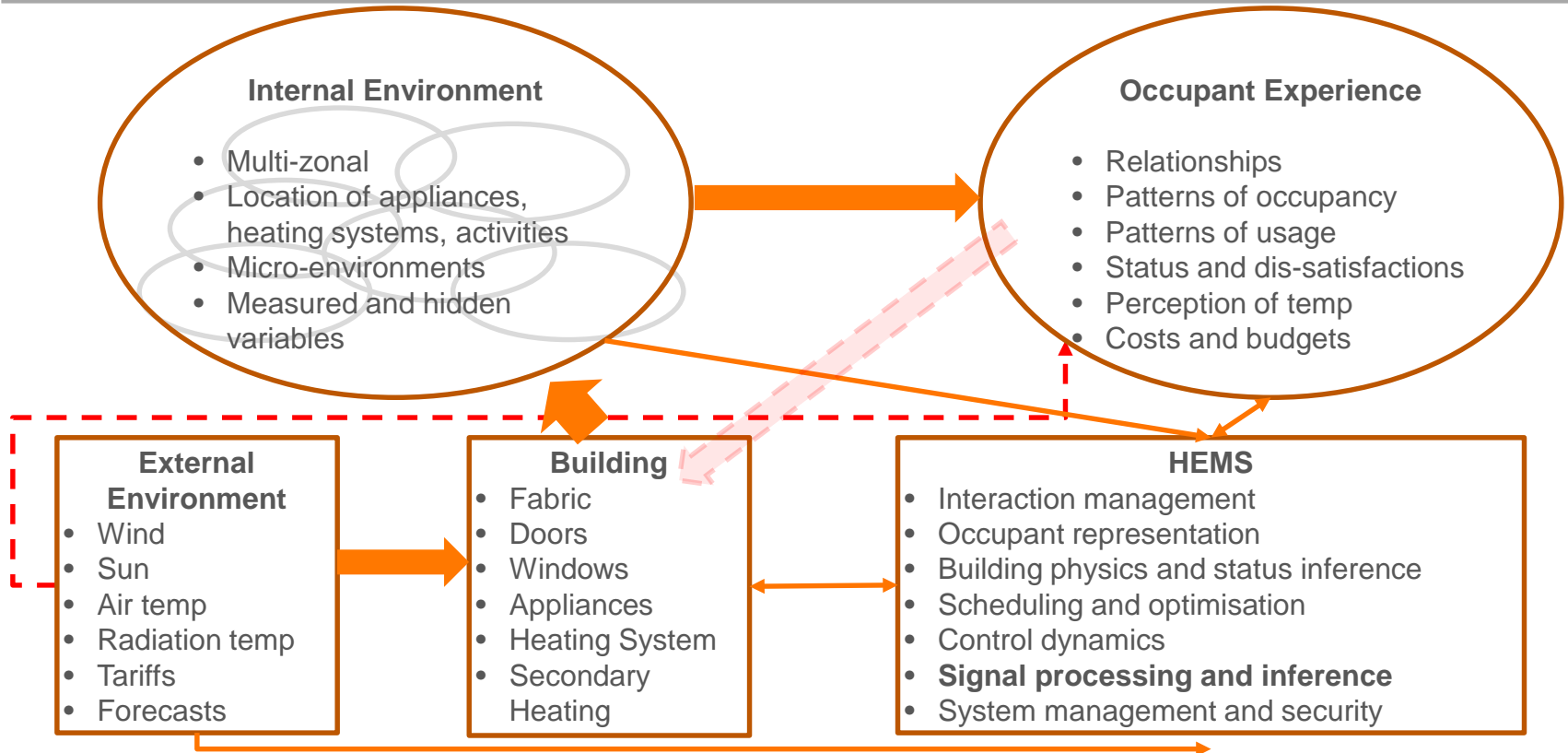
Heating is very variable



By permission of Robert Samson, UKERC

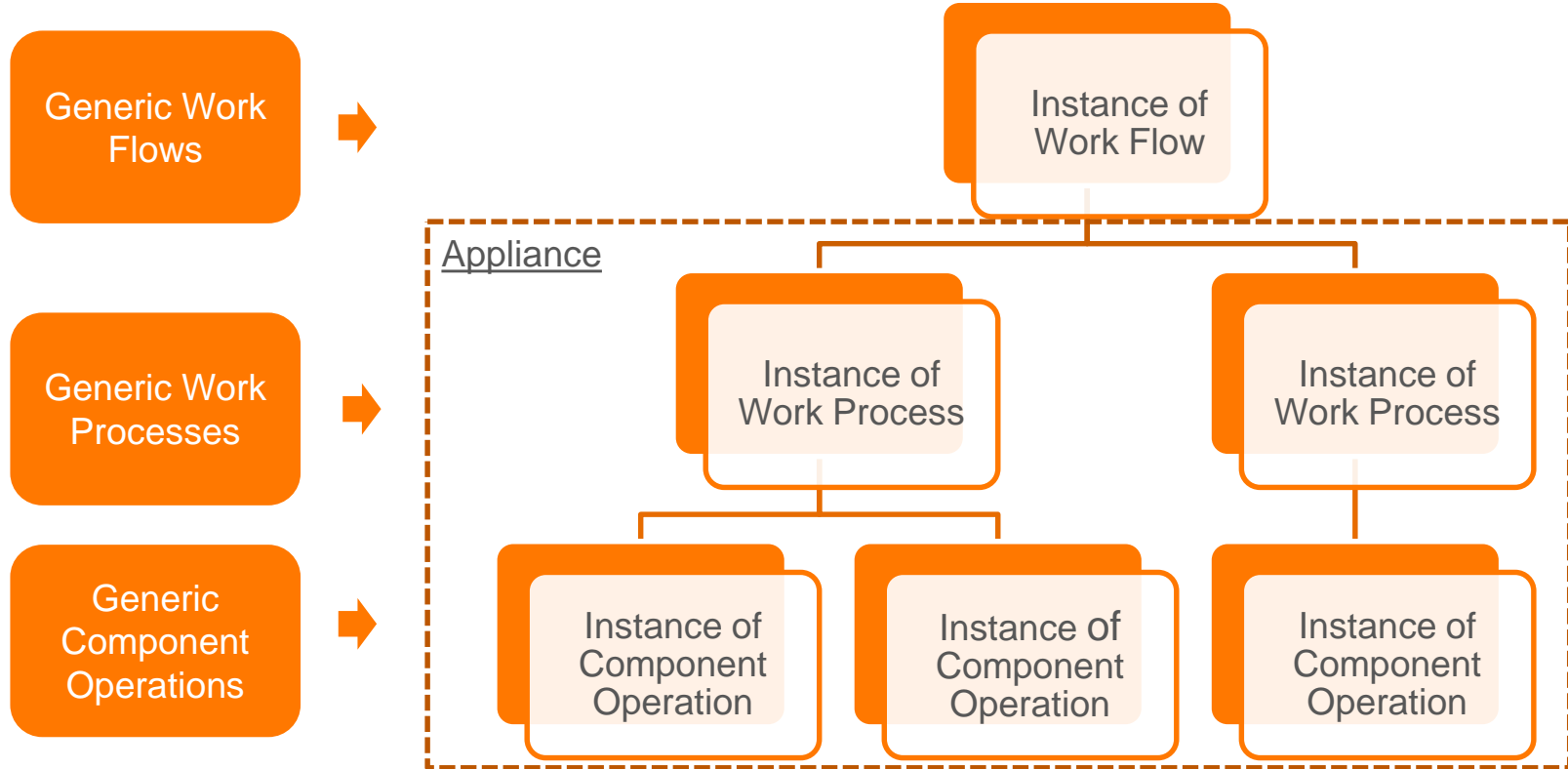


Complex socio-technical system



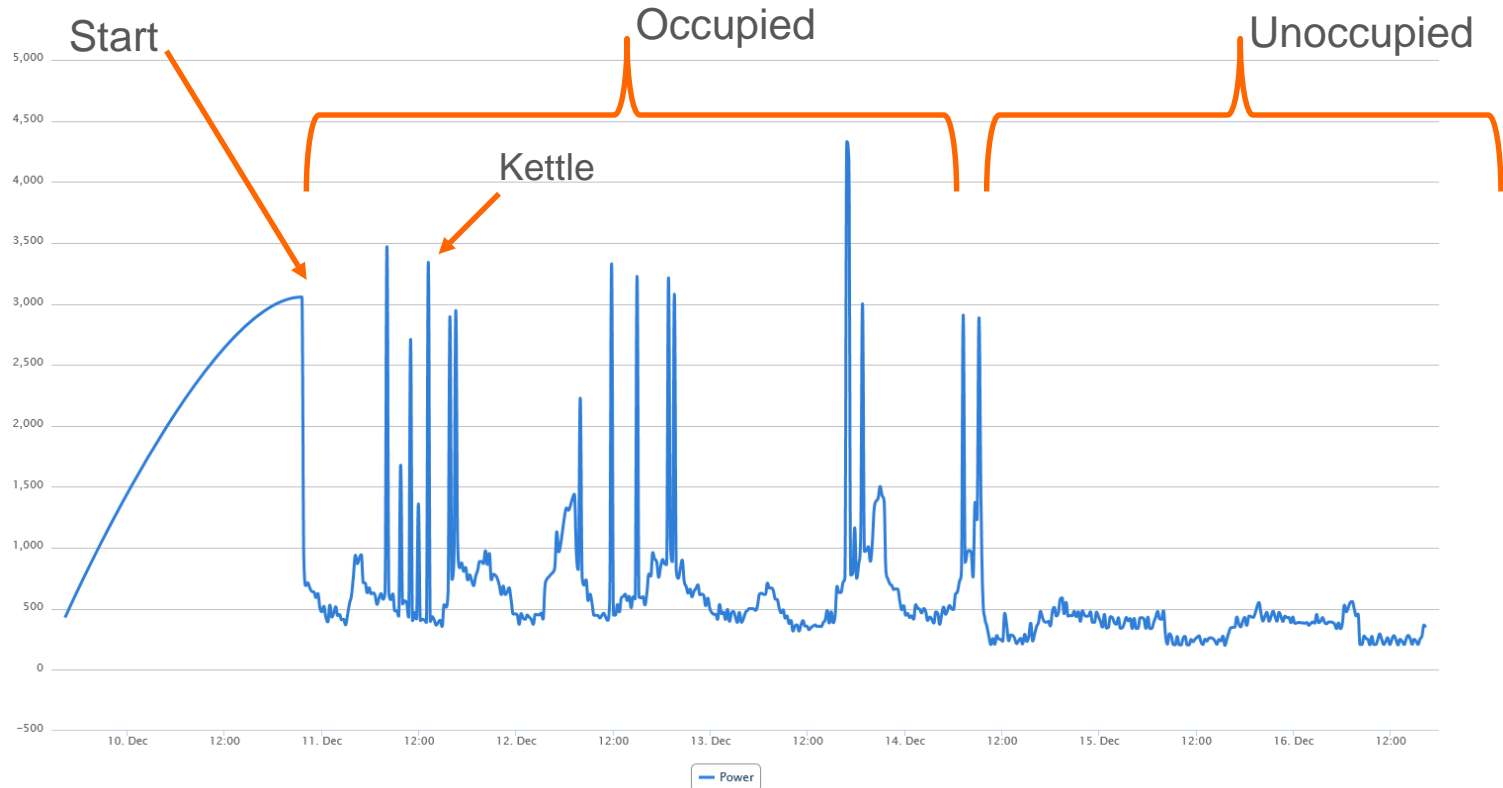


Hierarchy of Appliance Operation





Power usage





Registered Office
Energy Technologies Institute
Holywell Building
Holywell Park
Loughborough
LE11 3UZ



For all general enquiries
telephone the ETI on 01509
202020.



For more information about
the ETI visit www.eti.co.uk



For the latest ETI news and
announcements email
info@eti.co.uk



The ETI can also be followed
on Twitter [@the_ETI](https://twitter.com/the_ETI)